



S2

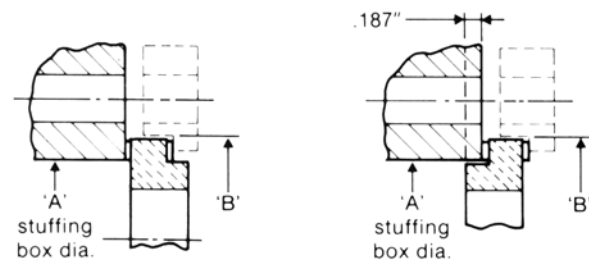


Style 'L' Clamp Seat

The style 'L' clamp seat is available in 99.5% Alumina ceramic and solid silicon carbide and comes lapped both sides.

The seat sel-centers by piloting into the stuffing box. (ANSI sizes)

Standard gaskets are C.A.F.; P.T.F.E. gaskets are available on request.



INCH		
Shaft ϕ	A ϕ	B ϕ
7/8	1.500	2.010
1	1.625	2.135
1 1/8	1.750	2.260
1 1/4	1.875	2.385
1 3/8	2.000	2.510
1 1/2	2.250	2.760
1 5/8	2.375	2.885
1 3/4	2.500	3.135
1 7/8	2.625	3.260
2	2.750	3.510
2 1/8	2.875	3.760
2 1/4	3.000	3.885
2 3/8	3.063	3.916
2 1/2	3.125	4.135
2 5/8	3.375	4.260
2 3/4	3.500	4.510
2 7/8	3.750	4.632
3	3.875	4.632
3 1/8	4.000	4.947
3 1/4	4.125	4.947
3 3/8	4.250	4.947
3 1/2	4.375	4.947
3 5/8	4.500	5.510
3 3/4	4.625	5.510
3 7/8	4.750	5.667
4	4.875	5.667